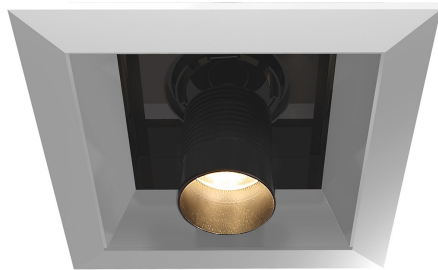


30297, 1-LIGHT 6.3W LED PULLDOWN RECESS



PRODUCT DETAILS

| | | |
|-----------------------|---|----------------|
| No. | : | 30297-0N |
| Product Color | : | PLATINUM/BLACK |
| Shade / Accent Colour | : | PLATINUM/BLACK |
| Length | : | 6.125" |
| Width | : | 6.125" |
| Height | : | 5.375" |
| Weight | : | 2lbs |


LIGHT SOURCE DETAILS

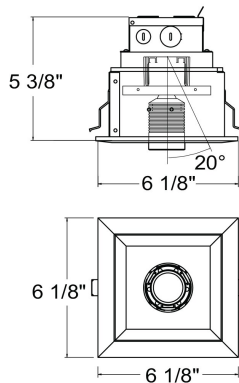
| | | |
|-------------------|---|----------------|
| Light Source Type | : | INTEGRATED LED |
| Input Voltage | : | 120V |
| Bulb Voltage | : | 120V |
| Socket Type | : | LED |
| Total Wattage | : | 6.3W |
| Initial Lumens | : | 480lm |
| Kelvin | : | 3000K |
| CRI | : | 80 |
| Dimmable | : | Yes |

OPTIONS AVAILABLE

| ITEM NO. | FINISH | SHADE |
|----------|----------------|----------------|
| 30297-01 | BLACK/BLACK | FROSTED |
| 30297-02 | WHITE/BLACK | WHITE/BLACK |
| 30297-0N | PLATINUM/BLACK | PLATINUM/BLACK |

TECHNICAL DETAILS

| | | |
|----------------------|---|---|
| Light Direction | : | Down |
| Driver | : | ES 700MA 9V |
| Adjustable Lamp Head | : | Yes |
| Location | : | DRY |
| Approval | : |  |
| Title 24 | : | Yes |
| Beam Angle | : | 20 |
| Cut Hole Length | : | 5.125" |
| Cut Hole Width | : | 5.125" |



PROJECT INFORMATION

 Job Name: Date: Type:

 Comments: